



Agriculture



Greenhouse



GSI PRO

Irrigation & Fertigation Management



Cloud based • 2 Irrigation Heads • Analog Inputs • EC/pH Fertigation **TOTAL CONTROL**

Irrigation & Fertigation Management

Total Irrigation and Fertigation Control
Unique control capabilities from anywhere
and at anytime with precision and simplicity.

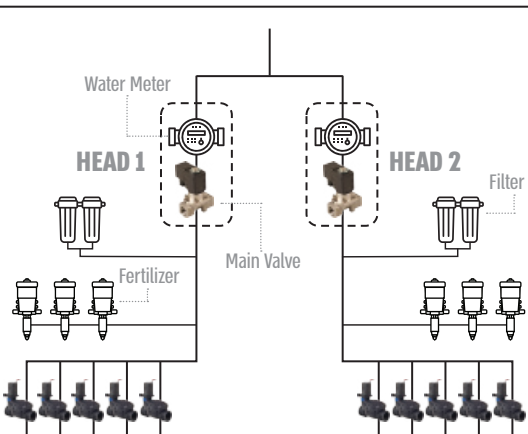


Cloud Based

Unit or project monitoring and
controlling.
From anywhere, any time with app
or on PC desktop

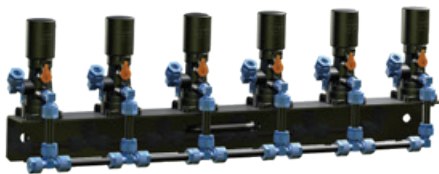
Control of
2 Irrigation Heads

Full control of 2 irrigation
heads including water
meters, fertigation, filters
flush at each head.



24 Start Times per
Irrigation Program

Operating up to 24 valves
+ 1 master valve.
DC Latch or 24 VAC



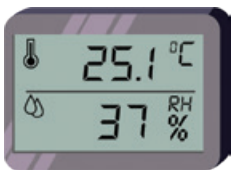
Filters Flushing

Dedicated control module for
automatic filter arrays control.



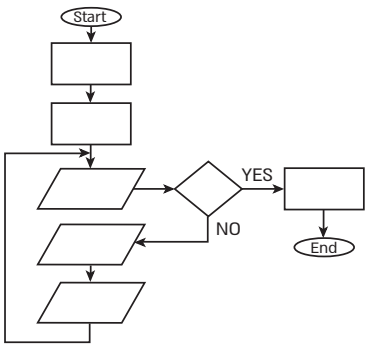
Analog Inputs
for Sensors

Up to 5 analog inputs
4-20 mA or 0-10 VDC.
For any sensor such as
pressure, temperature,
tensiometers, etc.
3 free inputs for choosing
between Analog or
Digital.



8 Fertigation Programs with
EC & pH Control

Full control over Galcon Fertijet fertigation machine.
3 fertilizers channels + 1 acid channel with complete
EC/pH close loop control.
Or up to 3 local fertilizers for each irrigation head.



Conditional Input Table
for Easy Setup

Advanced options for integrating
logical conditions into irrigation
programs.



TOTAL CONTROL

GSI with Gal1way Radio
capable of operating
valves up to 5 km

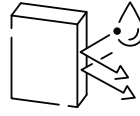
Advantages:



**Management
& control of
irrigation and
fertilization**



**Friendly
web
interface**



**Weather
resistant
casing**



**App
control**



**Advanced
graphical
interface**

Features:

- Control of up to 24 valves + Master
- Accurate fertilizing, proportional or quantitative with EC/pH
- Automatic filters flushing programs
- One way Remote Terminal Units
- Multiple users at different permission levels
- 8 Irrigation programs (series) with no limit to the number of starts per day
- Compatibility with a wide range of AC or DC solenoids
- Over The Air (OTA) Firmware updates
- Detailed set of reports: Irrigation logs, water consumption
- An array of real-time email alerts and / or push notifications from the app
- Real time over/under flow alert
- Irrigation by quantity or time
- Weather based irrigation option
- Units location on Google Map
- Indoor and Outdoor installation

Technical Characteristics:

- DC Controller - operated by Lithium batteries or Solar panel.
- AC Controller - 24 VAC 50/60 Hz
- Internal antenna
- Local LCD panel for basic operations and information

Sensors and Accessories



Water
meter



Rain Sensor



Pressure
gauge



Temperature
gauge



Tensiometer



EC/pH
Control

Models:

GSI-PRO AC	24 VAC 50/60 Hz
GSI-PRO DC	Lithium batteries
GSI-PRO DC	Solar panel with rechargeable batteries